

Get Updates!
Email:
BridleTrailsRover@gmail.com

BRIDLE TRAILS COMMUNITY CLUB

www.bridletrailscommunity.org

Join BTCC!
Contact any board member.



MARCH 2015 GENERAL MEETING

THURSDAY MARCH 19
7-8:30 PM

CHERRY CREST ELEMENTARY
12400 NE 32ND ST.
IN THE CAFETERIA
(TURN LEFT AFTER ENTERING THE MAIN DOORS, THEN RIGHT)

- 7:00 Welcome & Club Business
- 7:15 PSE Energize Eastside Project
- 7:20 BT Corner Park Opening Party & 140th Park
- 7:25 Bel-Red Corridor Development & Comp Plan
- 7:30 Guest Speaker:
Bellevue Mayor Claudia Balducci
- 7:50 Question and Answers with the Mayor
- 8:10 Club Announcements
- 8:15 Meet & Greet, Refreshments

Mark Your Calendar

- Mar 19, 7PM • General Meeting
- Apr 16, 7PM • Board & Advisory Committee Meeting
- May 2 (TBD) • Opening Celebration of Bridle Trails Corner Park
- May 21, 7PM • General Meeting
- Early Fall • Board & Advisory Committee Meeting
- Next Fall • General Meeting

Look for updates in The Rover

Guest Speaker- Bellevue Mayor Claudia Balducci

Loretta Lopez

Mayor Balducci began her involvement with the City while working on neighborhood issues in her Lake Hills neighborhood. She continued her neighborhood involvement and later became a member of the Bellevue City Council in 2004.

She was the Deputy Mayor from 2008 to 2009 and has been the Mayor since 2014. During the 11 years on the City Council, Mayor Balducci has been active in city and regional affairs. She has had numerous Council Assignments and Appointments. See the City Website to view the long list of her accomplishments and experience.

http://www.ci.bellevue.wa.us/claudia_balducci.htm

Mayor Balducci will speak about the City Council's general vision for Bellevue and its priorities. Mayor Balducci will also share the plans the Council developed about how the Council will conduct business. Her presentation will be followed by the opportunity to ask questions.

Join us to hear and to meet the Mayor.

Energize Eastside

Loretta Lopez

The BTCC and the Coalition of Eastside Neighbors for Sensible Energy (CENSE.org) continue their non-stop involvement in monitoring PSE's Energize Eastside Project. The PSE project, if completed, will consist of 18 miles of 230 KV power lines from Renton to Redmond. In some areas, including Bridle Trails, the new gigantic towers will be built along the Olympic gas line.

The BTCC and CENSE do not agree with PSE's assertion that the project is necessary. CENSE has concluded that there are alternative ways to provide reliable power to the Eastside without the massive, expensive Energize Eastside Project.

CENSE and BTCC persuaded the City to hire an Independent Technical Consultant (ITC) to assess the PSE Energize Eastside Project. We are waiting for the ITC to issue a report.

The next step is the City will conduct an Environmental Impact Statement (EIS). One of the most important steps of the EIS process is the scoping process. It is during the scoping process that the community has the opportunity to comment and identify alternatives and aspects of the environment that should be studied in detail. The scoping process will begin at the end of April.

The City has created a website with information about the EIS process, including when there are opportunities for public comment. See www.energizeeastsideeis.org

The BTCC and CENSE will comment during the scoping period. Check the CENSE website for the latest CENSE findings and information. See CENSE.org

All members of the community are encouraged to comment. If you have any questions about the BTCC position on the PSE Energize Eastside project, or you have any ideas or suggestions contact Norm Hansen at 861-7333 or Hansennp@aol.com



Claudia Balducci
Mayor of Bellevue

BT Corner Park Party – Opening Celebration, Saturday May 2

Time - To be determined

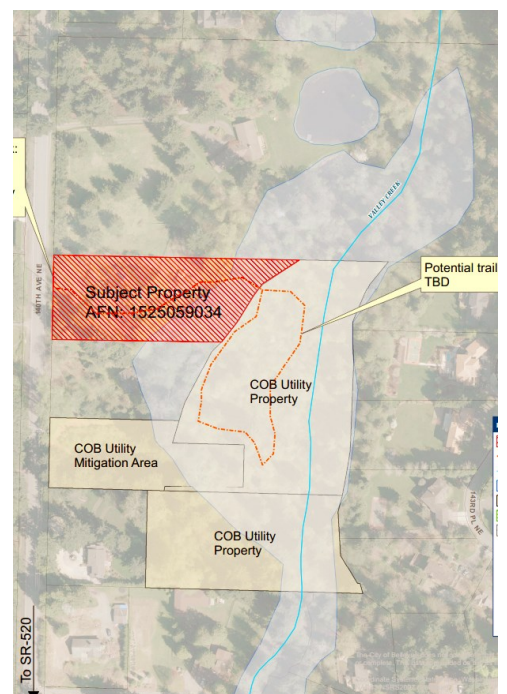


The BTCC is organizing a party to celebrate the opening of Bridle Trails Corner Park. Everyone is invited. We will invite members of the City Council and the Parks Board. There will be refreshments, activities for kids, and fun. Join us at the BT Corner Park and meet other BT residents.

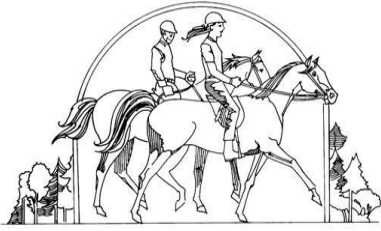
If you have any questions contact, Ellen Kerr at 425 861-0611 or email at bugsyk1@hotmail.com

140th Park

Loretta Lopez



The City purchased property on 140th with the remaining 2008 Park Levy funds that were allocated to the Bridle Trails area. The 140th property is located next to 4.1 acres of City owned wet-



BRIDLE TRAILS COMMUNITY CLUB
6619 132nd Ave. N.E., #133
Kirkland, WA 98033

THE ROVER



SUBSCRIBE TO THE ROVER

SPONSORED BY
BTCC

Email
BridleTrailsRover@gmail.com

lands. The result is that we will one day have a beautiful park that overlooks open space and wetlands.

The next step in the process is for the City to conduct a Master Plan Process. Then upon completion of the Master Plan Process, we can request funding to develop the new park at 140th. Currently there is no funding for the 140th Park.

Thank you to the BTCC Park Committee for working on 140th is working with the City as we start the process of creating another park in Bridle Trails. Park Committee members are Eva Amadi, Bill Aron, Norm Hansen, Chrstine Hemnes, Pamela Johnston, Ellen Kerr, Loretta Lopez, Allison O'Mahony, and Parul Shah.

If you are interested in joining the Park Committee, contact Loretta Lopez at 885-1851 or llopez@mstarlabs.com

Bellevue Comprehensive Plan (Comp Plan)

The City is required by the State Growth Management Act to adopt a Comprehensive Plan (Comp Plan). The Comp Plan provides the framework for all aspects of the City including, housing, neighborhoods, transportation, human services, environment, parks, urban design, land use, zoning, economic development and utilities.

In February, the City issued the Draft Comp Plan. See the plan at <http://www.bellevuewa.gov/comp-plan-update-drafts.htm>

The Planning Commission is reviewing the Draft Comp Plan and is accepting public comment. The Planning Commission will be discussing the Comp Plan at the Planning Commission meetings on March 11, 18 and 25th. To comment on the Comp Plan send your comments to planningcommission@bellevuewa.gov

From "INTRODUCTION · CITY OF BELLEVUE COMPREHENSIVE PLAN PUBLIC REVIEW DRAFT VERSION 1 - FEBRUARY 2015 VISION REVIEWED BY THE PLANNING COMMISSION "

WHAT'S IN THIS PLAN?

The Comprehensive Plan is designed to be a readable, functional document that will guide Bellevue's future development and fulfill the city's regional responsibilities in growth management. This plan is organized into two volumes.

- Volume 1 contains the community's Vision in the introduction, followed by the General Element chapters that contain goals and policies for each subject. □
- Volume 2 contains goals and policies of the subarea (or neighborhood area) plans and a consolidated list of longrange transportation facility projects.

The first section of Volume 1 contains introductory materials that establish the context for the plan — background information about Bellevue and the community's Vision for the future. Volume 1 then includes all of the general plan elements that contain the policies that apply citywide. Each of the elements is organized into three basic components: (1) an individual vision statement; (2) an overview that describes the background and context for the element; and (3) a list of goals and policies that, when implemented, will achieve the community's vision. Volume 1 also contains a Glossary of key terms

Next BTCC Meeting

May 21, 2015 – 7:00
Cherry Crest School

Public Safety in Bridle Trails

The BTCC has asked the Bellevue Police Department to increase its patrols of the Bridle Trails area. The BTCC is forming a Public Safety Committee. The purpose of the Committee is to meet with Bellevue Police Department representatives on a periodic basis. If you are interested in joining the Committee, send a message to Loretta Lopez at 885-1851 or llopez@mstarlabs.com

BOARD OF DIRECTORS

Loretta Lopez, President
885-1851 • llopez@mstarlabs.com
bridletrails@gmail.com

Wayne Bruning, Treasurer
883-6843 • wbruning@prodigy.net

Alice Prince, Secretary
883-8501 • afprince42@aol.com

Jim Binder
881-6276 • jamesbinder@att.net

Norm Hansen
861-7333 • hansennp@aol.com

Stuart Heath
881-8800 • elliottbay@yahoo.com

Pat Janes
885-2955 • patriciajanes@frontier.com

ADVISORY COMMITTEE

Heidi Benz-Merritt
883-8856 • heidibenz@frontier.com

Marianne Heywood
869-6447 • marianneheywood@gmail.com

Pamela Johnston
881-3301 • pamjjo@msn.com

Ellen Kerr
861-0611 • bugsyk1@hotmail.com

Cindy Ludwig
869-0701

Duse McLean
885-3173 • dusem@aol.com

Darrell Tanner
883-0885

Toni Vincent-Fisher
206-605-7071 • tonivincent@aol.com

Zhanbing Wu
zhanbing.wu@gmail.com

News and Information

www.BridleTrailsCommunity.org
Subscribe to BridleTrailsRover@gmail.com