

See p 3-4 for
more pictures in
the electronic version

BRIDLE TRAILS COMMUNITY CLUB

Sound
Transit Rail
Yard Decision Nov 15



NOVEMBER 2012 GENERAL MEETING

THURSDAY NOVEMBER 15
7-8:30 PM

NORTH BELLEVUE
COMMUNITY CENTER,
4063 148TH AVE NE

Meetings are planned to return to Cherry
Crest Elementary when meeting rooms are
available.

- 1 Welcome & Club Business
- 2 Come & ask questions. Find out what Sound Transit is proposing to build down the hill
Guest Speakers:
 - Michael Williams, Sound Transit Director of Light Rail Develop.
 - Bellevue Department of Planning and Community Development
3. Electrical Reliability Study
4. Acheson Lease Update
5. Other New Business
- 6 Meet & Greet

Mark Your Calendar

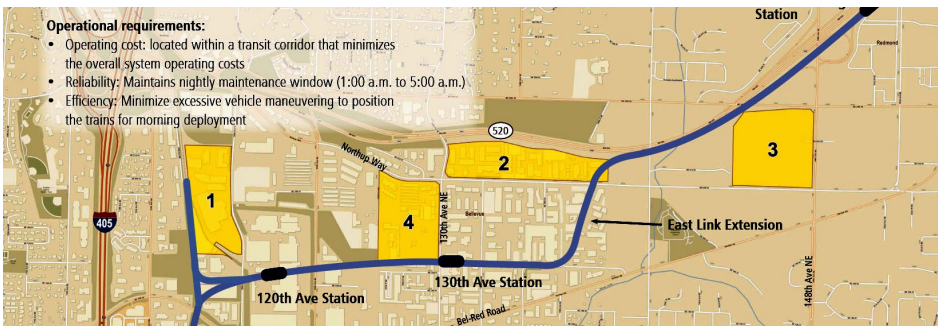
- Today • Object to Rail Yard in Bel-Red (See article)
- Nov 15, 7 PM • General Meeting
- Nov 19 • City Council Meeting See "Lights" article below
- Dec 20, 7 PM • Board Meeting
- Jan 17, 7 PM • General Meeting

Sound Transit Proposes 25 Acre Rail Yard in Bel-Red Corridor

Loretta Lopez

Sound Transit has selected 5 locations as possible sites for a 25 to 30 acre Rail Maintenance Yard. Four of the sites are in the Bel-Red Corridor, the fifth site is in Lynnwood. The sites in the Bel-Red corridor are:

1. 120th: From Lowes Hardware south, including the Audi dealership
2. NE 20th east of 130th and south of 520: Down the hill on 130th where Daly's paint, Acura dealership, and Park Place dealership are located.
3. 148th/NE 24th: This would require removing all businesses in the area including Fred Meyer, Harley Davidson and AAA.
4. 130th: This area includes Cadman Cement and Gravel, and the Evans office park where many businesses are located.



Sound Transit's Proposed Bellevue Sites from Public Meeting Materials

The Maintenance Yard would include night operations from 1:00 am to 5:00 am.

The Board of the BTCC requested that Sound Transit extend its comment period in order that the General Membership could discuss at the BTCC November 15th meeting. Sound Transit denied the BTCC Board's request.

At the BTCC Board Meeting on October 18th, the Board discussed and decided to object to all four locations in the Bel-Red Corridor. The basis for the Board's decision is that the placement of a 25 to 30 acre Rail Maintenance Yard is inconsistent with the Comprehensive Plan and the zoning for the Bel-Red corridor. Further, the City has spent years of study and millions of dollars in changing the zoning in the Bel-Red corridor from light industrial to retail/office and residential zoning.

The Sound Transit Board will make its decision on which location to select to study on November 15.

Next Steps:

1. Send an email message or call Bellevue City Councilmembers to ask them to object to Sound Transit's decision to select a location in the Bel-Red Corridor. Call 425-452-7810 or email council@bellevuewa.gov
2. Send an email message to the Sound Transit Board to object to the placement of a Rail Maintenance Yard in the Bel-Red corridor. Email boardadmin@soundtransit.org

For more information, contact Loretta Lopez (See p 2)

See Also <http://projects.soundtransit.org/Projects-Home/Link-Operations-and-Maintenance-Satellite-Facility.xml>

Lights, Camera, No Action! We Need Your Help!

Ellen Kerr

The Bellevue 2013-14 Preliminary Budget was recently released. The proposal submitted to implement the recommendations for the electrical study did not make the initial cut. As most of you know, we have been working on this project and subsequent \$300k study for many years. We DO NOT want the city to put this study on the shelf, wasting tax payer dollars as well as an opportunity to ensure our city is safe and power is restored quickly when the next big storm hits. We have set up a meeting with Steve Sarkozy, the City Manager as well as John Chelminiak, the Council lead. We are requesting the project be included in the budget.

The next opportunity for the community to voice their opinion on the preliminary budget is November 19th at the Council meeting. We plan to have a group attending. Please join us and/or write to the Bellevue City Council, council@bellevuewa.gov and let them know how important the project is and ask them to consider including it in the 2013-14 budget. Thank you! Please contact Ellen Kerr or Norm Hansen with questions/comments (See p 2).

BTCC BOARD RESOLUTION— NE 24TH PARK - APPROVED ON 9-17

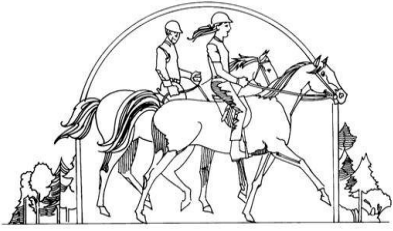
The Board of the BTCC recommends that the City proceed on designing and developing the park at the corner of NE 24th and 134th as a priority since there have been 3 public meetings on the NE 24th park and those in attendance were in agreement to proceed and because the State and the City do not have an agreement on the property known as the Acheson Property.

City Park Board Endorses NE 24th Park

Loretta Lopez

On October 9, the City (Scott VanderHyden) presented the plans for the NE 24th Park to the Parks Board.

Several members of the BTCC presented comments to the Park Board in



BRIDLE TRAILS COMMUNITY CLUB
P.O. Box 1534
Bellevue, WA 98009

support of the NE 24th Park. After some questions and comments to the City staff regarding a neighboring landowner's concerns, the Park Board endorsed moving forward with the NE 24th park.

The next step is that the City staff will prepare a Management Brief to the City Council in the next few weeks. Upon reviewing the Management Brief, we hope that the City Council will endorse the plans for NE 24th Park. Once the City Council endorses the NE 24th Park, then the City staff will proceed to develop the final design plans. If all goes well, the City may be able to start working on the park in early 2013.

The plans for the NE 24th Park include a small meadow bordered by native plants, a grassy area and a playground with logs and rocks for children. The blackberries near the wetland will be removed and replaced with native plants. In addition, there will be a mulch/bark trail that will wind through the 2 acre park.

See the Park Board presentation at www.bellevuewa.gov/bridle_trails_levy.htm

If you have any questions, contact Loretta Lopez (see right)

Acheson Property: The City and the State Terminate Negotiations

Loretta Lopez

When it appeared that the State would not be able to improve or maintain the Acheson property (a 5 acre parcel on 134th that Lois Acheson donated to the State) the BTCC recommended that the City and State enter into an agreement. The BTCC recommended the use of funds from the City of Bellevue Park Levy to preserve the 5 acre wooded parcel. The City and the State negotiated for many months. The parties agreed this past month to terminate the negotiations without an agreement.

If you have any questions contact Loretta Lopez (see right)

More Water, Less Trees

The Pike's Peak Water Reservoir, located in Bridle Trails State Park, is proposed to be replaced with a 4.5 M gallon reservoir, below ground storm detention vaults, pump station building, and fencing, on a 3-4 acres site. Construction is proposed for 2013-2014 and estimated at \$8 M. The larger reservoir is proposed to accommodate growth in both the downtown and Bel-Red areas. This is the only site under consideration.



Current Water Reservoir Location — approx. 1/4 North of NE 39th St in the 12300 block.

The existing reservoir, a 1.0 M gallon 85 ft dia. by 25 ft tall structure on 1/4 acre, has been there since 1968 and needs seismic retrofitting. The City pays an annual lease for the site.

The Bridle Trails Park Foundation strongly objected to the first plan. The City is working with State Parks to find an acceptable overall footprint, how that would fit into the park, and the lease payments. The plan may affect 100's of trees, view, and trails.

Construction would involve access from streets through the current easement just off of NE 39th St, under the power lines. Trails around the site may be temporarily relocated. Once a site layout has been determined (following State acceptance and neighborhood input), the design and permitting phases would get underway, followed by the contractor bid process, then construction.

BTCC is working with the City to better engage with the community and with the BTPF. Contact Pamela Johnston (see p 2) or Jay Hummel, City of Bellevue--Utilities Engineering, 425.452.4160 or JHummel@bellevuewa.gov

BOARD OF DIRECTORS

Nancy Bennett, President & Webmaster
883-8090 • bridletrails@gmail.com

Ellen Kerr, Vice-President
861-0611 • bugsyk1@hotmail.com

Loretta Lopez, Vice-President
885-1851 • llopez@mstarlabs.com

Jill Lum, Co-Treasurer
jill_lum@msn.com

Lynn Hurdelbrink, Co-Treasurer
827-6481 • lynnfh@frontier.com

Alice Prince, Secretary
883-8501 • Afprince42@aol.com

Pat Janes
885-2955 • patriciajanes@frontier.com

Lorraine Trosper, Kirkland Representative
822-9861 • ltrosper@aol.com

ADVISORY COMMITTEE

Bill Aron
827-1155 • waron@u.washington.edu

Jim Binder
881-6276 • jamesbinder@att.net

Heidi Benz-Merritt
883-8856 • heidibenz@frontier.com

Norm Hansen
861-7333 • hansennp@aol.com

Stuart Heath
881-8800 • elliottbayrealestate@gmail.com

Marianne Heywood
869-6447 • marianneheywood@gmail.com

Pamela Johnston, newsletter editor
881-3301 • pamjjo@msn.com

Cindy Ludwig
869-0701

Jim Mantell
867-1935 • jmantell@hotmail.com

Duse McLean
885-3173 • dusem@aol.com

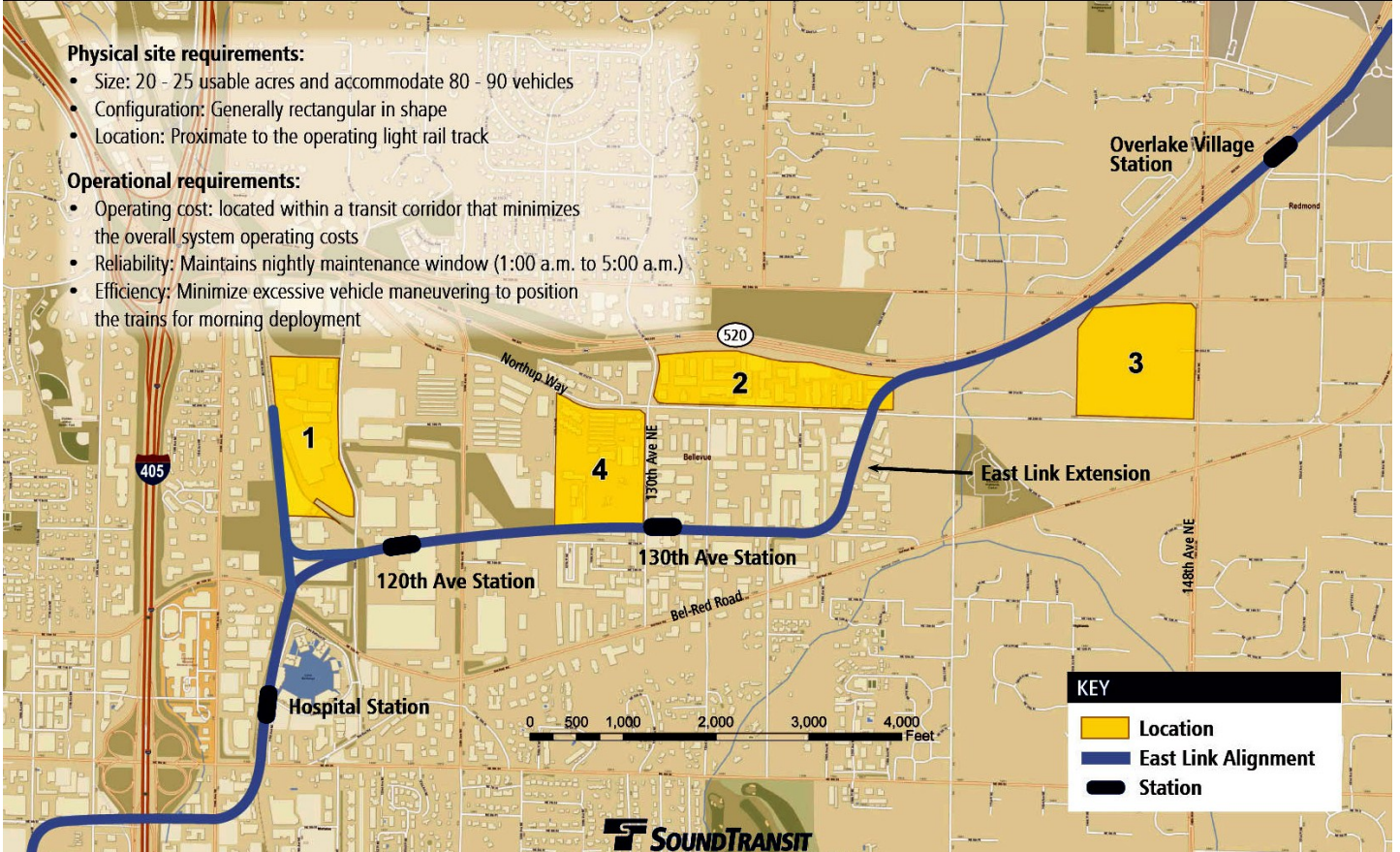
Darrell Tanner
883-0885

Are you reading this on a pink paper via US post?
Want to receive it only on email?
Please email Jill_Lum@msn.com



SITE MAP - EAST

LINK OPERATIONS & MAINTENANCE SATELLITE FACILITY



Sound Transit Sites — from Oct 8th and 11th Public Meetings

<http://projects.soundtransit.org/Documents/pdf/projects/link/OMSFMeeting%20materials102012.pdf>



NE 24th St Park Plan presented to Park Board Oct 9

The plans for the NE 24th Park include a small meadow bordered by native plants, a grassy area and a playground with logs and rocks for children. The blackberries near the wetland will be removed and replaced with native plants. In addition, there will be a mulch/bark trail that will wind through the 2 acre park.

Proposed NE 24th Street Park Plan

