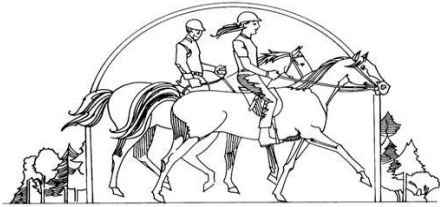


BRIDLE TRAILS COMMUNITY CLUB NEWSLETTER

www.bridletrailscommunity.org

September 2012



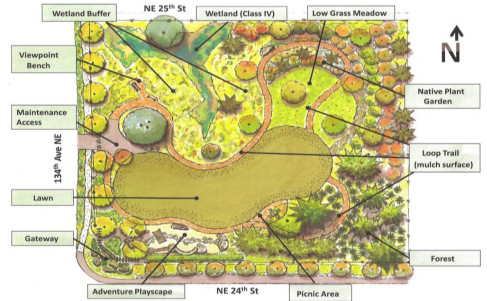
GENERAL MEETING

THURSDAY SEPTEMBER 20
7-8:30 PM

NORTH BELLEVUE
COMMUNITY CENTER,
4063 148TH AVE NE

Meetings are planned to return to Cherry
Crest Elementary when meeting rooms are
available.

1. Welcome and Club Business
2. Working with BTCC to achieve success
3. Scott VanderHyden from Parks & Community Services will be our guest speaker. He will be hosting a public meeting to share the updates and proposed Park Plan for the new 24th St park.
4. General membership vote on BTCC Board Resolution—NE 24th St Park
5. Other New Business
6. Meet and Greet



Preliminary 24th St Park Plan - June 14 Presentation

Attend the September 20 Meeting to Vote on NE 24th Park Resolution

Loretta Lopez

At the August Board meeting, the BTCC passed two resolutions regarding the creation of two parks in the Bridle Trails area. For the NE 24th St Park Resolution, the President of the BTCC will present it to the General Membership for a vote at the September 20, General Meeting.

Bellevue citizens passed a Park Levy in 2008. The City allocated funds from the Park Levy for the creation of a park or parks in the Bridle Trails area. After gathering comments from the Bridle Trails community, the BTCC recommended that the City

- (1) enter into a long term lease with the State and create a park on the 5 acre parcel known as Acheson property located at 52nd and 134th, and
- (2) purchase the property at NE 24th and 134th to create a park.

After considering the information presented by Loretta Lopez that the City and State had not yet come to an agreement on a long term lease arrangement of the Acheson property, the Board passed a resolution recommending that the City continue to negotiate.

After considering information presented by Loretta Lopez that (1) the City purchased the land, (2) that the City had completed three public meetings on the NE 24th park to which all Bridle Trails residents were invited and the consensus was to move forward on the final design of the Park, (3) that the City was ready to present a design at a fourth public meeting, and (4) that the City and the State had not agreed to a long term lease of the Acheson property, the Board passed a resolution recommending that the City proceed on designing and developing a park at NE 24th and is asking the membership to support this resolution.

NEP Art Project Rolls On

The proposed design for art in Bridle Trails was on display at Westminster Chapel from May 20 - June 3. The art includes work at three sites. Each site will feature different art that incorporates boulders etched or bronze inlaid with equestrian and/or nature images and text. The City is currently making arrangements to move the boulders – many to a saw shop for cutting and a couple to their final sites. For those at their final site, Bruce Myers, the artist, will work on the boulder onsite. The large boulder for NE24th & 120th NE is an example. The schedule for this work is in progress. For questions, contact Mary Pat Byrne, in Bellevue Planning and Community Development. bellevuewa.gov/bridle-trails-equestrian-art.htm



One of the concepts

Proposed Park Plan for NE 24th St

All Bridle Trails residents have been invited to our September 20th meeting to consider the proposed Park Plan and its priority. Scott VanderHyden, from the City Parks Dept, will present. This will be the fourth public meeting.

Very positive responses were received regarding the preliminary NE 24th park plan presented at the third community meeting on June 14. The plan included tree lined streets, benches, enhancing wetlands and forests, open lawn, meadow, trails, adventure playscape, and a gateway connecting it to Viewpoint Park. See details at www.bellevuewa.gov/bridle_trails_levy.htm.

This summer, the plan was refined with input from the public meeting and from city departments to meet development requirements. If supported by the residents, the next step is a presentation and recommendation at a fall Park Board meeting.

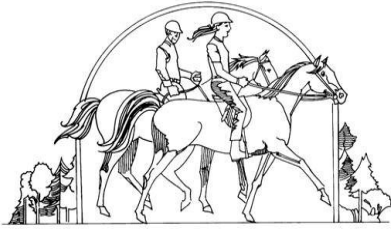
Snow Removal Success

Hate the long wait for snow removal on 132nd/134th Avenue NE? Next time help should come sooner. With much persistence from Al Paige, the street classification will be upgraded from the low priority “tertiary” designation to a higher priority designation. Look for changes to the Snow Response Priority Map at www.bellevuewa.gov/snow-ice.htm

Thanks Tony Marcum, manager of the Transportation Dept., for all your help getting this issue through the Transportation, Utilities, Fire and Police Depts. For more details on this process, contact Al Paige at abpaige@frontier.com.

Mark Your Calendar

- Sep 20, 7 PM • **General Meeting and Community Planning Meeting for the NE 24th and 134th Park**
- Oct 18, 7 PM • **Board Meeting**
- Nov 15, 7 PM • **General Meeting**



BRIDLE TRAILS COMMUNITY CLUB
P.O. Box 1534
Bellevue, WA 98009

Hundreds Enjoy The Third Annual Bridle Trails Night Out

Nancy Bennett

We had great weather this year for the third annual Bridle Trails Night Out at the Cherry Crest Mini Park on July 17. A fun-loving crowd gathered for the annual event hosted by the Bridle Trails Neighborhood Watch Committee. The Bridle Trails Community Club sponsored the ice cream treats for the event. Many local businesses and individuals donated cash or goods to support the event.

Approximately 250 Bridle Trails neighbors came out to socialize over pizza, sandwiches, ice cream, cookies and cake. Some came for the free food, the free bike tune-ups, and the great entertainment provided by the Hot Dog USA Jump Rope Team. Many enjoyed a complimentary massage. Everyone came for the camaraderie and to show their support for the community.

Det. Richard Chinn and other officers from the Bellevue Police Department spoke to the crowd about crime prevention and emergency preparedness, the themes of this year's Bridle Trails Night Out.

The original purpose of "Night Out" events across the country is to prevent crime by "taking back" the streets. The Bridle Trails Night Out extends beyond that and has become the annual opportunity for residents to come together as a more cohesive community. When the neighborhood watch program was started by the Bridle Trails Neighborhood Watch Committee, there were only a handful of block watches in Bridle Trails. Now there are more than 50! Some sections of Bridle Trails are yet to be covered by the block watch program. If you live on a street that is not yet covered, please volunteer to set one up.

Thank you Len, Tom, Jack, Russ, Pam, Laura and William for planning the event and to all of the volunteers. For next year, we really need more people to help plan the event. Please contact them at bridletrailswatch@gmail.com.

City & PSE Move Towards a Plan

Norm Hansen

The City of Bellevue is continuing to develop an implementation plan for reliability improvement in conjunction with Puget Sound Energy. The City will meet with PSE on Monday October 8th to review the 2011 PSE Bellevue Reliability Report. Bellevue is developing a plan to implement the consultants recommendations presented to the Bellevue City Council earlier this year (See our BTCC May Newsletter).

Bellevue is reviewing a budget request to implement the highest priority items in the consultants' report. The Bellevue budget is currently in process and is expected to be finalized in December.

Streets are for Everyone

The City of Bellevue's Neighborhood Traffic Safety Services (NTSS) recently launched a traffic safety blog – Streets are for Everyone (SAFE) – to help connect residents with City staff and to address traffic safety concerns throughout the city. The blog is primarily an educational tool aimed at proactively communicating traffic safety and project information to residents. The blog is also an opportunity to provide a venue for dialog between residents and the City. Blog visitors can comment on each story, alert us to traffic safety concerns via an online form, and share content with others using a variety of sharing mechanisms.

The blog contains information that is otherwise not included on the City of Bellevue website. A story on why the City does not install Children at Play signs and a story debunking the notion that stop signs are effective speed control devices have already been published. Future stories include the overlay program, sharrows, chicanes, and more.

Streets are for Everyone-
bellevuentss.wordpress.com

Edited from email by John Murphy, Assistant Planner, NTSS, 425-452-6967

BOARD OF DIRECTORS

Nancy Bennett, President & Webmaster
883-8090 • bridletrails@gmail.com

Ellen Kerr, Vice-President
861-0611 • bugsyk1@hotmail.com

Loretta Lopez, Vice-President
885-1851 • llopez@mstarlabs.com

Jill Lum, Co-Treasurer
jill_lum@msn.com

Lynn Hurdelbrink, Co-Treasurer
827-6481 • lynnfh@verizon.net

Alice Prince, Secretary
883-8501 • Afprince42@aol.com

Pat Janes
885-2955 • patriciajanes@verizon.net

Lorraine Trosper, Kirkland Representative
822-9861 • ltrosper@aol.com

ADVISORY COMMITTEE

Bill Aron
827-1155 • waron@u.washington.edu

Jim Binder
881-6276 • jamesbinder@att.net

Heidi Benz-Merritt
883-8856 • heidibenz@frontier.com

Norm Hansen
861-7333 • hansennp@aol.com

Stuart Heath
881-8800 • elliottbayrealestate@gmail.com

Marianne Heywood
869-6447 • marianneheywood@gmail.com

Pamela Johnston, newsletter editor
881-3301 • pamjjo@msn.com

Cindy Ludwig
869-0701

Jim Mantell
867-1935 • jmantell@hotmail.com

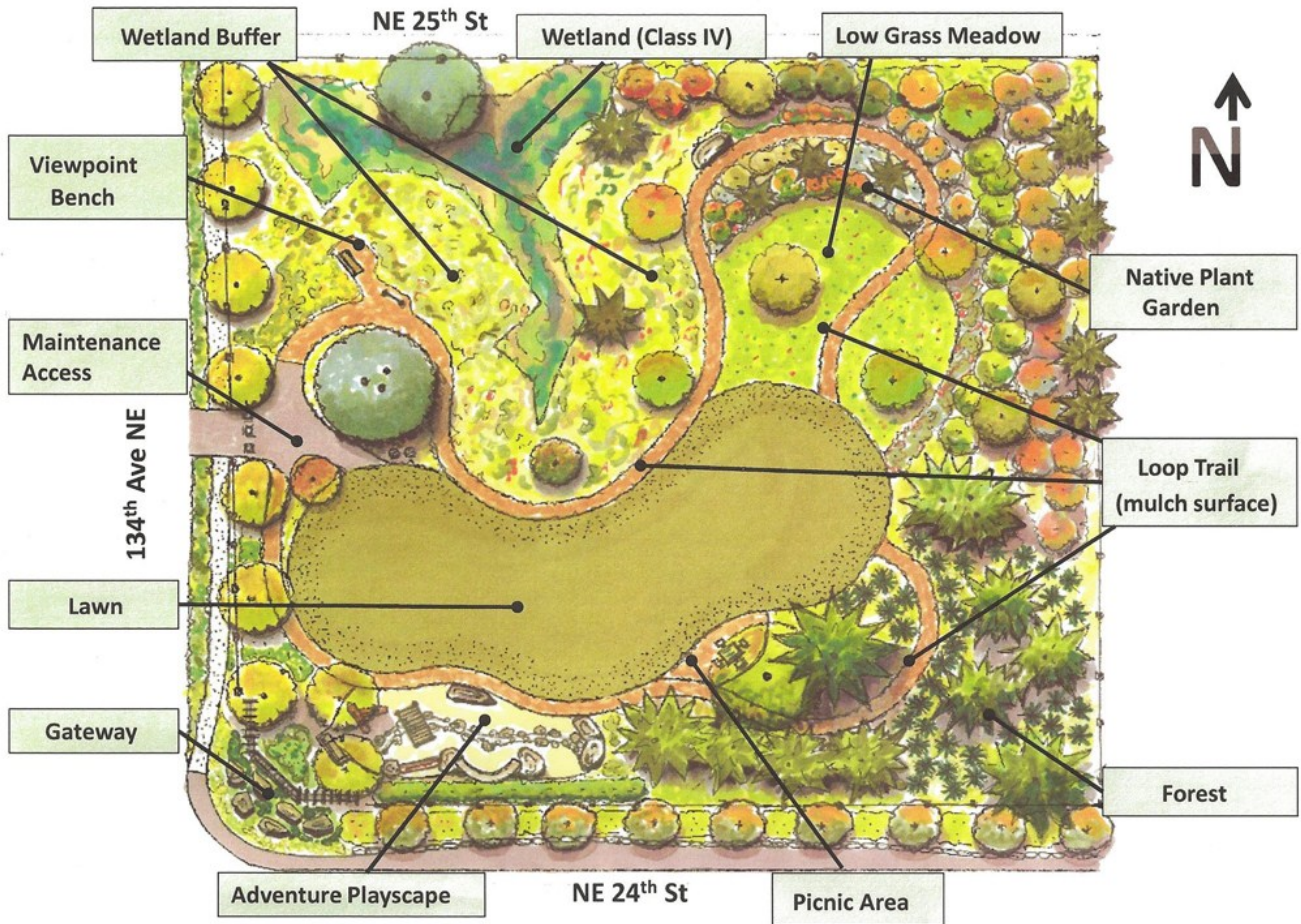
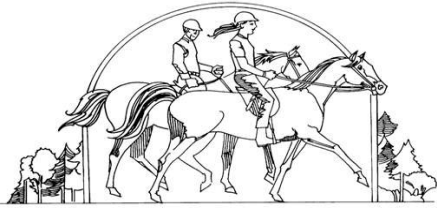
Duse McLean
885-3173 • dusem@aol.com

Darrell Tanner
883-0885

Are you reading this on a pink paper via US post? Want to receive it only on email?

BRIDLE TRAILS COMMUNITY CLUB NEWSLETTER

www.bridletrailscommunity.org



Preliminary 24th St Park Plan - June 14 Presentation